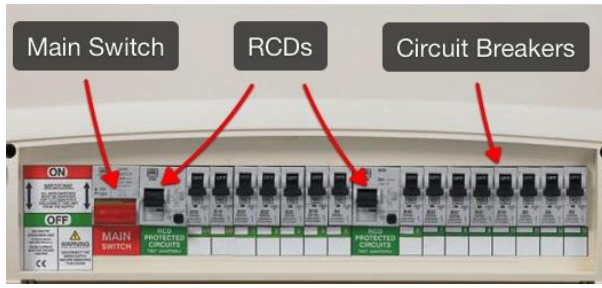


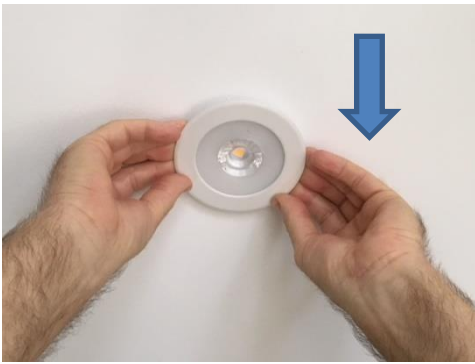


**Instruction for OGL SATURN 60 LED driver replacement P/N: CS110-W09-W-R, CS110-N09-W-R, CS110-C09-W-R (White cable/round LED connector)**

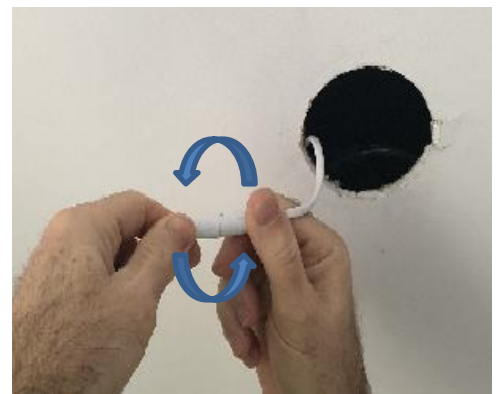
**Mains power switch in house's fuse box to be disconnected (switch to OFF position) before LED replacement globe installation**

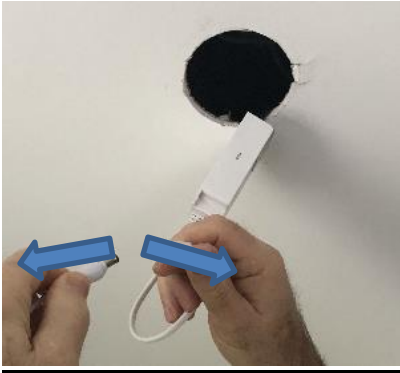


1. Pull down downlight fitting with fingers until LED globe's connector is visible



2. Disconnect the LED glob from LED driver (transformer) by holding both sides of the connector and turning anticlockwise, and then pull side ways to disengage connector.





3. Pull down the driver until the mains plug is visible



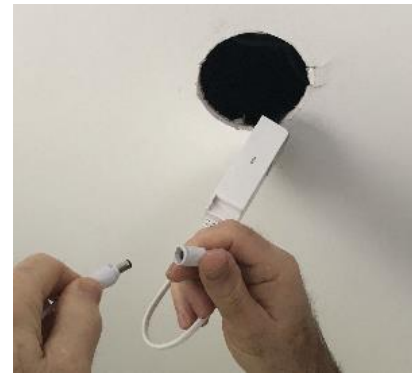
4. Disconnect the plug from the power point



5. Take the replacement driver and connect to mains socket (make sure it is fully plugged-in)



6. Take the LED globe and connect to the LED driver



Make sure both side of the connector are pushed-in and turned

7. Bend LED glob fixing springs towards the globe and then insert springs into the mounting hole in a ceiling





8. Push LED globe firmly against ceiling



9. Switch ON mains power and then lighting switch to test if lamps works OK.

10. This was last step of LED globe replacement.

